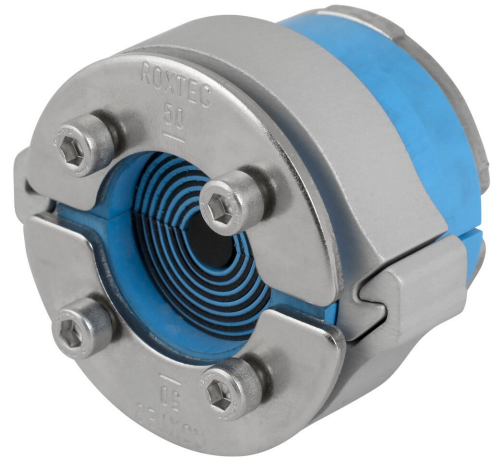




Sello Roxtec C RS SLO

Sello redondo para optimización de espacio y peso.

Roxtec C RS SLO es una solución de sellado ligera pero muy resistente para entradas de cables y tuberías individuales en armarios, envoltorios y equipos. Proporciona protección contra fuego y entrada de polvo y agua. Además ofrece retención de cable a prueba de vibraciones. Por lo tanto, resulta ideal para sectores de movilidad como el material rodante. La solución consta de un sello Roxtec C RS adaptable y un manguito Roxtec C SLO. Está disponible en cuatro tamaños diferentes para cubrir cables y tuberías de 4 a 54 mm.



- Ligero
- Eficiencia de área
- Permite cables precabados
- Versión que puede abrirse

Características del producto



Calificación contra incendios



IP/UL NEMA

Estructura de instalación



Armarios envoltorios & prefabricados

Calificaciones y certificados

Fuego

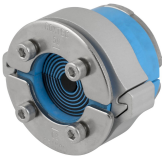
- Clasificación E/EI según EN 45545 E30

Estanquidad

- IP 66

Datos de los componentes de sellado

Componentes de sellado



Sello C RS SLO

Para obtener información detallada, visite [roxtec.com](https://www.roxtec.com).



Kits de sellos preconfigurados

mm/kg



C RS SLO 43 ALU



C RS SLO 50 ALU



C RS SLO 68 ALU



C RS SLO 75 ALU

| Título | Configuración | Dimensiones de abertura Ø | Peso | N.º de art. |
|-----------------|----------------|------------------------------|------|-------------|
| C RS SLO 43 ALU | 1x (4.0-23.0) | 44 - 46 | 0.25 | 234690 |
| C RS SLO 50 ALU | 1x (8.0-30.0) | 51 - 53 | 0.29 | 234691 |
| C RS SLO 68 ALU | 1x (26.0-48.0) | 69 - 71 | 0.43 | 234692 |
| C RS SLO 75 ALU | 1x (24.0-54.0) | 76 - 78 | 0.5 | 234694 |

The product information provided by Roxtec does not release the purchaser of the Roxtec system, or part thereof, from the obligation to independently determine the suitability of the products for the intended process, installation and/or use.

Roxtec gives no guarantee for the Roxtec system or any part thereof and assumes no liability for any loss or damage whatsoever, whether direct, indirect, consequential, loss of profit or otherwise, occurred or caused by the Roxtec systems or installations containing components not manufactured by an authorized manufacturer and/or occurred or caused by the use of the Roxtec system in a manner or for an application other than for which the Roxtec system was designed or intended.

Roxtec expressly excludes any implied warranties of merchantability and fitness for a particular purpose and all other express or implied representations and warranties provided by statute or common law. User determines suitability of the Roxtec system for intended use and assumes all risk and liability in connection therewith. In no event shall Roxtec be liable for indirect, consequential, punitive, special, exemplary or incidental damages or losses.

The Roxtec products are offered and sold in accordance with the conditions of the Roxtec General Terms of Sales. The latest version of the Roxtec General Terms of Sales can be downloaded from <https://www.roxtec.com/en/about-us/about-roxtec/general-terms-of-sales/>

We reserve the right to make changes to the product and technical information without further notice. Any errors in print or entry are no claims for indemnity. The content of this publication is the property of Roxtec International AB and is protected by copyright.

This document was generated on: 2024-09-27